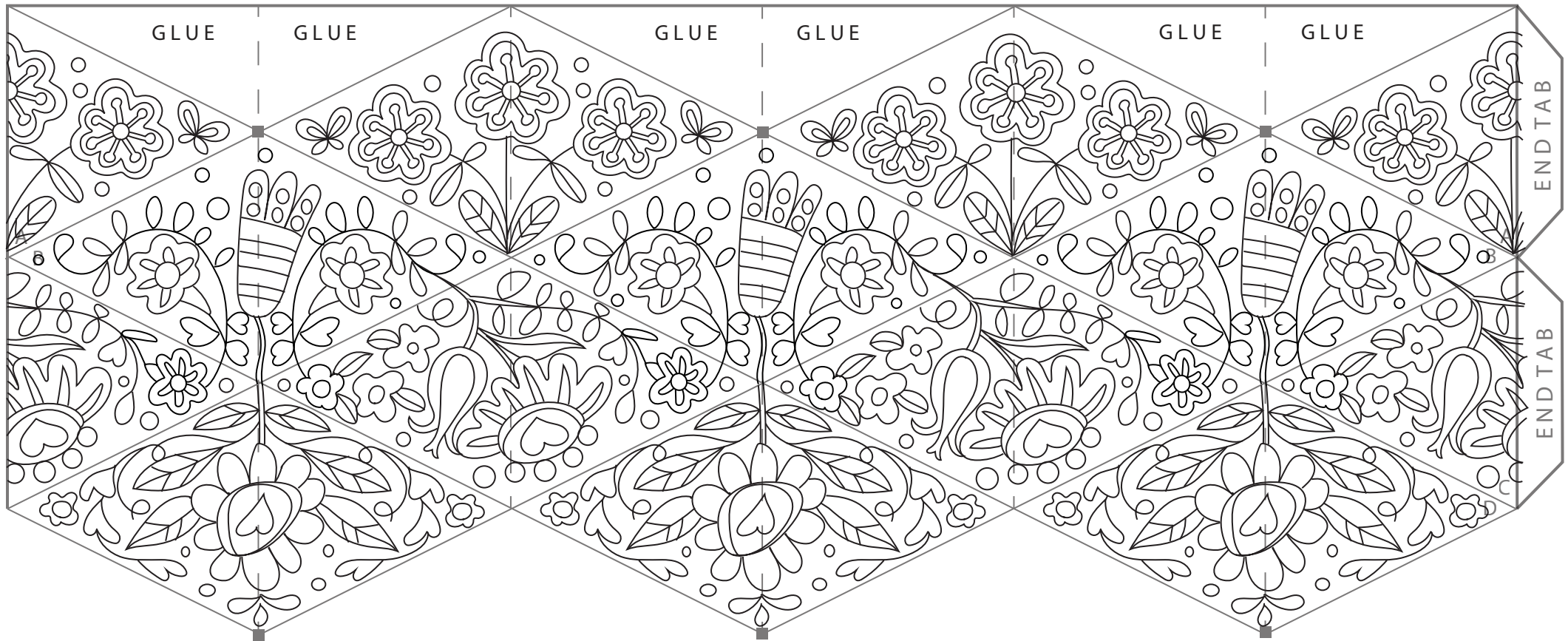




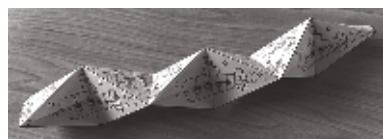
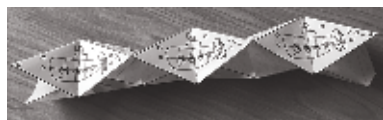


Flora

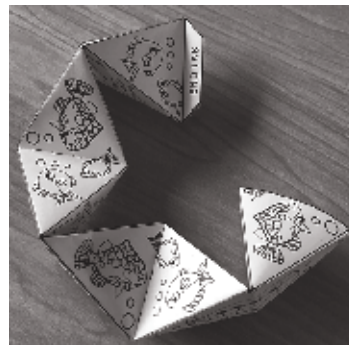


Instructions to make up the 'tangle'.

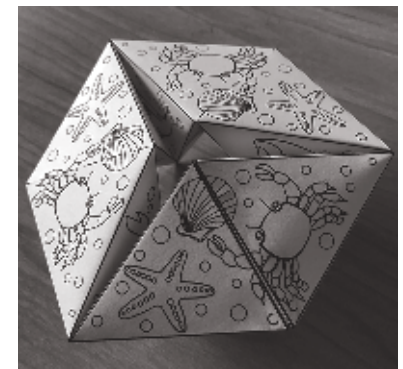
1. After colouring in the design cut around the whole shape
2. Crease the dashed lines face to face - these are called valley folds.
3. Crease the diagonal lines back to back - these are called mountain folds. At the same time crease along the END TABS.
4. Gently push the folds to match square to square - you'll end up with a tubular shape.
5. Use a gluestick or double-sided tape and apply glue/tape to the triangles marked GLUE - press together.



6. Carefully fold the tube to form a hexagon, matching the A, B, C, D's. Apply glue/tape to the end tabs and tuck into the end of the tube and press.



*Have fun with your Flexangle!*





A hippopotamus in a housecoat



*Ahoy there my hearties!*

